

SPECIFICATIONS

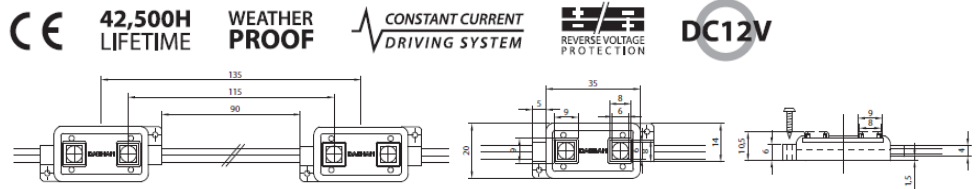
ELECTRICAL

Current dissipation : 50 mA (white, and warm white)
 35mA (red, green, and blue)
 Power Consumption : 0.60 W (white, and warm white)
 0.42 W (red, green, and blue)
 Operating power : DC 12V
 Maximum serial connection : 50 modules
 Electronic dimming control supported

THERMAL

Cooling : Ambient air
 Maximum operating temperature : 60°C (140°F)
 Minimum operating temperature : -25°C (-13°F)
 Maximum storage temperature : 60°C (140°F)
 Minimum storage temperature : -30°C (-22°F)

PHYSICAL



PRECAUTIONS

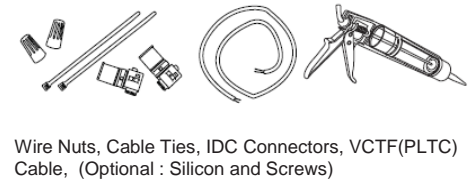
		USE DC12V ONLY		Do not perform actions listed below - Alter or modify - Touch LED lamps with sharp objects - Put glue or silicon over the LED lamps		
		DO NOT USE AC INPUT				
		Do not cut or rejoin wires while product is connected with live power source				Maximum driver quantity per serial connection is limited. Failure causes overload of current and damages to the product
		Avoid performing installation under rain or high humidity for outdoor use				Refer to 'WIRE THICKNESS' table to use proper wire thickness between SMPS and the first LED module Failure will cause dimmed output
		Do not use the product under circumstances listed below - High temperature spots over 60°C (140°F) - Spots draw extreme moisture or dust - Spots have corrosive gas or highly effected by electromagnetic field				Cable length between SMPS and the first LED module is limited. Refer to 'CONNECTION WITH POWER SUPPLY' on page 2

PREPARATIONS

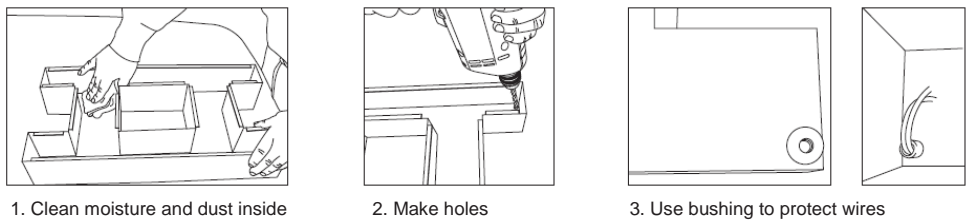
TOOLS REQUIRED



SUPPLIES REQUIRED



PREPARE CHANNELS

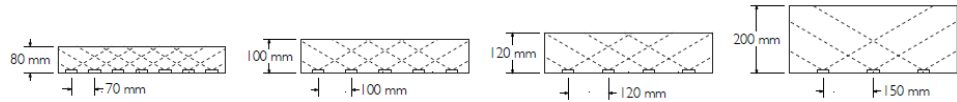


1. Wipe out dust, water, and oil inside. 3M tape will come off easily if product is mounted on uncleaned surfaces.
 2. Make holes for wires from modules to SMPS.
 3. Without bushings, wires will easily be cut and short-circuit will occur.
- *Use white paint inside the channels for better reflection

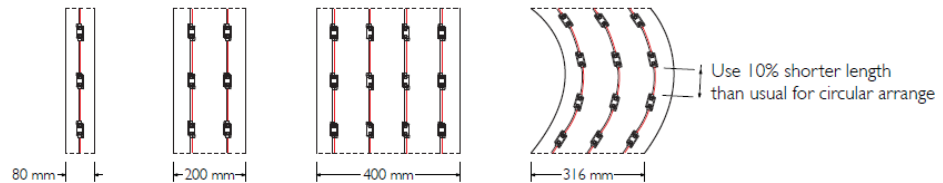
LAYOUT DENSITY GUIDELINES

Use recommended length for pitch between each module to achieve optimum lighting output while maintaining lowest unit cost. Failure or misplacing will cause dimmed spots or uneven appearance of light on the surface.

RECOMMENDED PITCH PER DEPTH

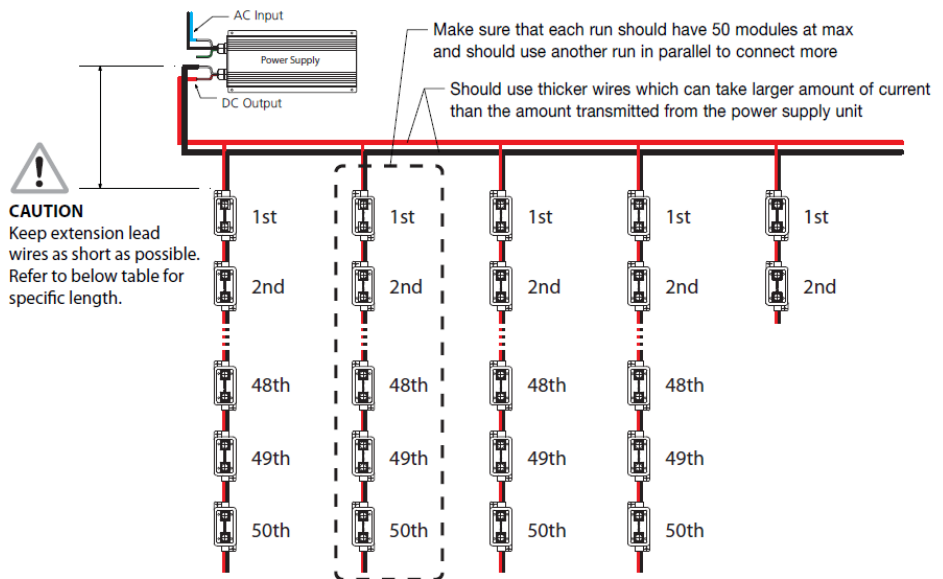


RECOMMENDED LAYOUT DENSITY PER CHANNEL WIDTH



CONNECTION GUIDE

Maximum driver quantity per serial connection is limited. Using more quantity per run will cause overload from SMPS which damages all connected products. This will cause voltage drop and also dimmed lighting output.



CONNECTION WITH POWER SUPPLY

EXTENSION OF POWER SUPPLY LEAD WIRES

Model Name	PSCS-0030-12	PSCS-0060-12	PSCS-0120-12
Output (W)	30W	60W	120W
Output (A)	2.5A	5A	10A
Max Q'TY - White*	43pcs	85pcs	170pcs
Max Q'TY - Colors*	61pcs	122pcs	243pcs
Recommended Extension Wire	VCTF1.25 AWG18	VCTF2.0 AWG14	VCTF2.0 AWG12
Maximum Length	5M (15FT)	5M (15FT)	5M (15FT)

*Maximum quantity for S-LED is based on 85% of specified capacity of power supplies for extended lifespan
 **PSCS-0600-12, PSCS-1000-12 are not weather-proof
 Equip with protective box for outdoor use and the box should have ventilating holes